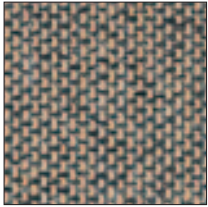


Tessuti

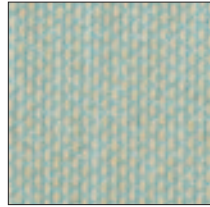
Cat. E



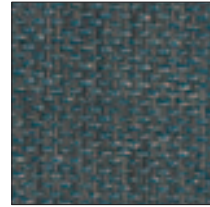
E33



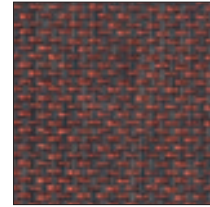
E34



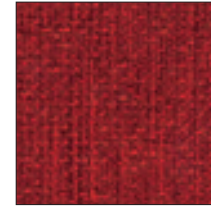
E35



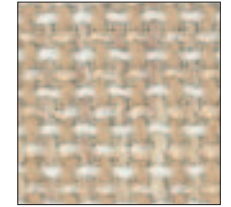
E36



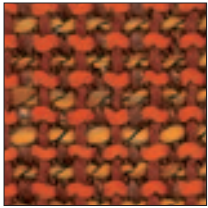
E37



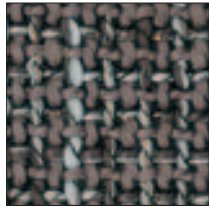
E38



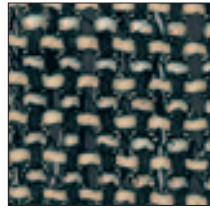
E39



E40



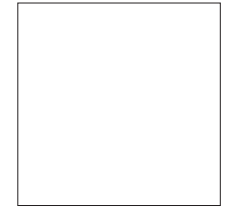
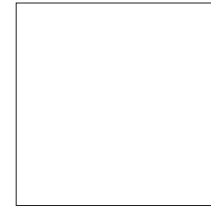
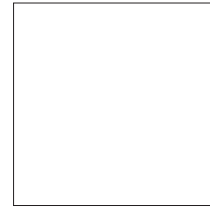
E41



E42



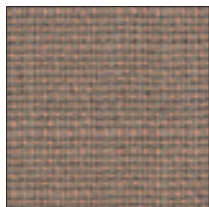
E43



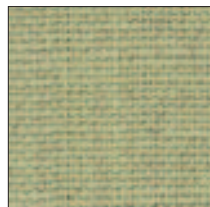
Cat. F



F90



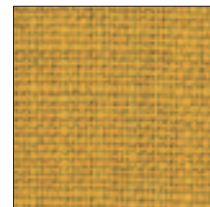
F91



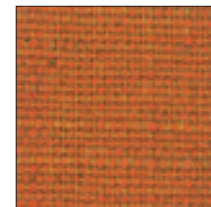
F92



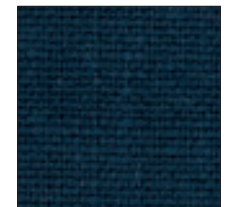
F93



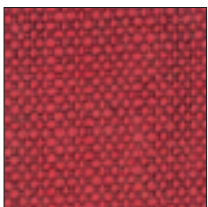
F94



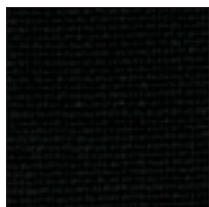
F95



F96



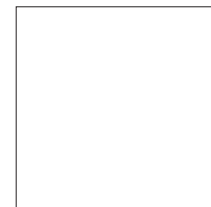
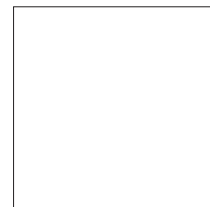
F97



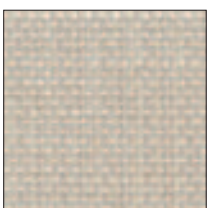
F98



F99



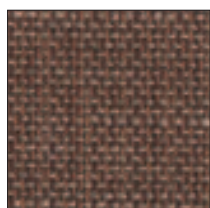
Cat. G



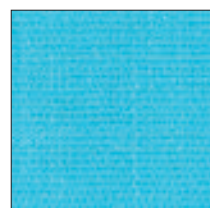
G86



G87



G88



G93



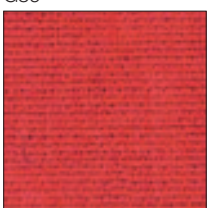
G94



G95



G96



G97



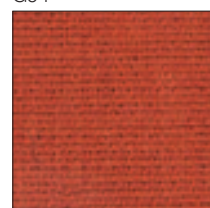
G98



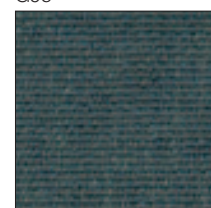
G99



GA1



GA2



GA3



GA4



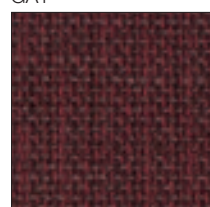
GA5



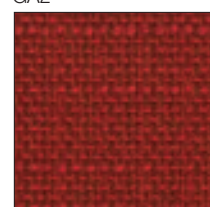
GA6



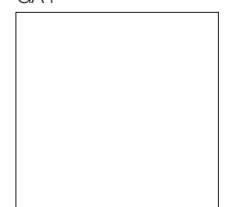
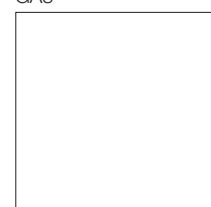
GA7



GA8



GA9



Cat. H



HK1



HK2



HK4



HK5



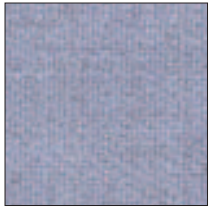
HK6



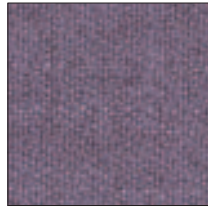
HK7



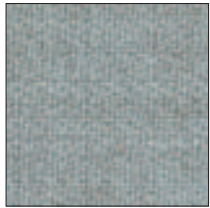
HN1



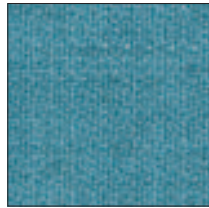
HN2



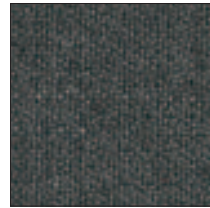
HN3



HN4



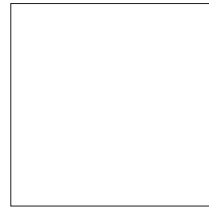
HN5



HN6



HN7



HG2 Ecopelle



HG3 Ecopelle



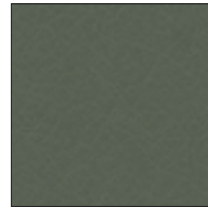
HG4 Ecopelle



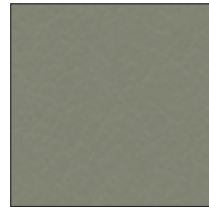
HG5 Ecopelle



HG6 Ecopelle



HG7 Ecopelle



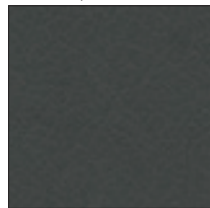
HG8 Ecopelle



HG9 Ecopelle



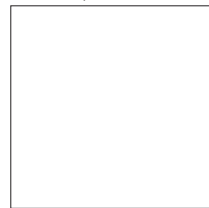
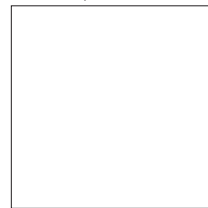
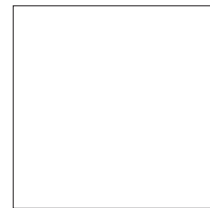
HH1 Ecopelle



HI7 Ecopelle



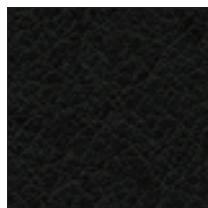
HK9 Ecopelle



Pelle



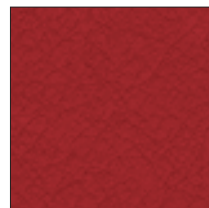
PL01



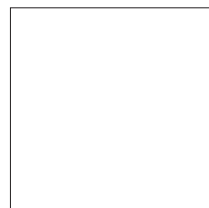
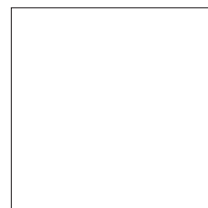
PL02



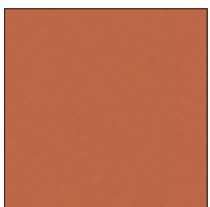
PL04



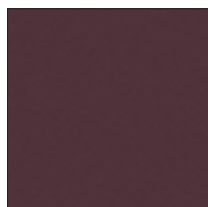
PL05



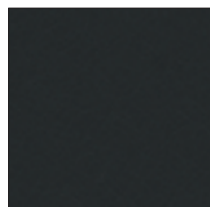
Cuoio



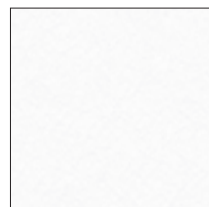
C01



C04



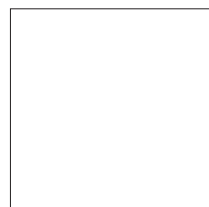
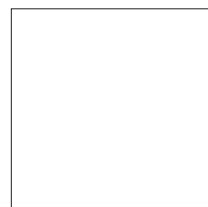
C10



C13



C17



Caratteristiche tecniche tessuti

TESSUTI	COMPOSIZIONE	PESO	ALTEZZA	ABRASIONE	SOLIDITÀ LUCE	LAVAGGIO	REAZIONE AL FUOCO
		gr-mt	cm.	Martindale	Min.		
E33	64%PL, 23%CO, 13%VI	370/380	138	16.000	4/5	Ⓟ ☒ ☒ ☒ ☒	
E34	64%PL, 23%CO, 13%VI	370/380	138	16.000	4/5		
E35	64%PL, 23%CO, 13%VI	370/380	138	16.000	4/5		
E36	64%PL, 23%CO, 13%VI	370/380	138	16.000	4/5		
E37	64%PL, 23%CO, 13%VI	370/380	138	16.000	4/5		
E38	64%PL, 23%CO, 13%VI	370/380	138	16.000	4/5		
E39	18%PC, 53%PL, 29%CO	515	140	20.000	5	Ⓟ ☒ ☒ ☒ ☒	
E40	18%PC, 53%PL, 29%CO	515	140	20.000	5		
E41	18%PC, 53%PL, 29%CO	515	140	20.000	5		
E42	18%PC, 53%PL, 29%CO	515	140	20.000	5		
E43	18%PC, 53%PL, 29%CO	515	140	20.000	5		
F90	60% LI, 40 VI,	480	140	17.000	4	Ⓟ ☒ ☒ ☒ ☒ ☒	
F91	60% LI, 40 VI,	480	140	17.000	4		
F92	60% LI, 40 VI,	480	140	17.000	4		
F93	60% LI, 40 VI,	480	140	17.000	4		
F94	60% LI, 40 VI,	480	140	17.000	4		
F95	60% LI, 40 VI,	480	140	17.000	4		
F96	60% LI, 40 VI,	480	140	17.000	4		
F97	60% LI, 40 VI,	480	140	17.000	4		
F98	60% LI, 40 VI,	480	140	17.000	4		
F99	60% LI, 40 VI,	480	140	17.000	4		
G86	36% PL,31% VI,18% CO,15% LI	350	140	35.000	5	Ⓟ ☒ ☒ ☒ ☒	
G87	36% PL,31% VI,18% CO,15% LI	350	140	35.000	5		
G88	36% PL,31% VI,18% CO,15% LI	350	140	35.000	5		
G93	99% PL, 1% PA	630	140	>40.000	>6	Ⓟ ☒ ☒ ☒ ☒	
G94	99% PL, 1% PA	630	140	>40.000	>6		
G95	99% PL, 1% PA	630	140	>40.000	>6		
G96	99% PL, 1% PA	630	140	>40.000	>6		
G97	99% PL, 1% PA	630	140	>40.000	>6		
G98	99% PL, 1% PA	630	140	>40.000	>6		
G99	99% PL, 1% PA	630	140	>40.000	>6		
GA1	99% PL, 1% PA	630	140	>40.000	>6		
GA2	99% PL, 1% PA	630	140	>40.000	>6		
GA3	99% PL, 1% PA	630	140	>40.000	>6		
GA4	99% PL, 1% PA	630	140	>40.000	>6		
GA5	99% PL, 1% PA	630	140	>40.000	>6		

GA6	36% PL,31% VI,18% CO,15% LI	350	140	35.000	5		
GA7	36% PL,31% VI,18% CO,15% LI	350	140	35.000	5		
GA8	36% PL,31% VI,18% CO,15% LI	350	140	35.000	5		
GA9	36% PL,31% VI,18% CO,15% LI	350	140	35.000	5		
HK1	70% WO, 25%PA, 5% AF	345	150	40.000	5		Test sigaretta e fiammiferi: passa
HK2	70% WO, 25%PA, 5% AF	345	150	40.000	5		
HK4	70% WO, 25%PA, 5% AF	345	150	40.000	5		
HK5	70% WO, 25%PA, 5% AF	345	150	40.000	5		
HK6	80% WO, 20%PA	375	150	40.000	4		Test sigaretta e fiammiferi: passa
HK7	80% WO, 20%PA	375	150	40.000	4		
HN1	80% WO, 20%PA	375	150	40.000	4		
HN2	48%CO, 21%VI, 15%LI, 16%PL	900	138/140	45.000	5		
HN3	48%CO, 21%VI, 15%LI, 16%PL	900	138/140	45.000	5		
HN4	48%CO, 21%VI, 15%LI, 16%PL	900	138/140	45.000	5		
HN5	48%CO, 21%VI, 15%LI, 16%PL	900	138/140	45.000	5		
HN6	48%CO, 21%VI, 15%LI, 16%PL	900	138/140	45.000	5		
HN7	48%CO, 21%VI, 15%LI, 16%PL	900	138/140	45.000	5		
HG2	63% PU, 37% CO	480	140	150.000	5-6	<p>Pulire con tessuto inumidito e insaponato e sciacquare bene con acqua pulita. Non usare solventi, candeggine e detergenti chimici o spray per lucidare.</p>	ANTIFIAMMA: - IMO Resolution A.652 (16)/89 - EN 1021-2/93 - BS 5852-1/79 - BS 5852/90 Sezione 4 - crib 5 - UNI 9175/87 e 9175 FA-1/94 classe 1.IM (UNO I EMME)
HG3	63% PU, 37% CO	480	140	150.000	5-6		
HG4	63% PU, 37% CO	480	140	150.000	5-6		
HG5	63% PU, 37% CO	480	140	150.000	5-6		
HG6	63% PU, 37% CO	480	140	150.000	5-6		
HG7	63% PU, 37% CO	480	140	150.000	5-6		
HG8	63% PU, 37% CO	480	140	150.000	5-6		
HG9	63% PU, 37% CO	480	140	150.000	5-6		
HH1	63% PU, 37% CO	480	140	150.000	5-6		
HI7	63% PU, 37% CO	480	140	150.000	5-6		
HK9	63% PU, 37% CO	480	140	150.000	5-6		